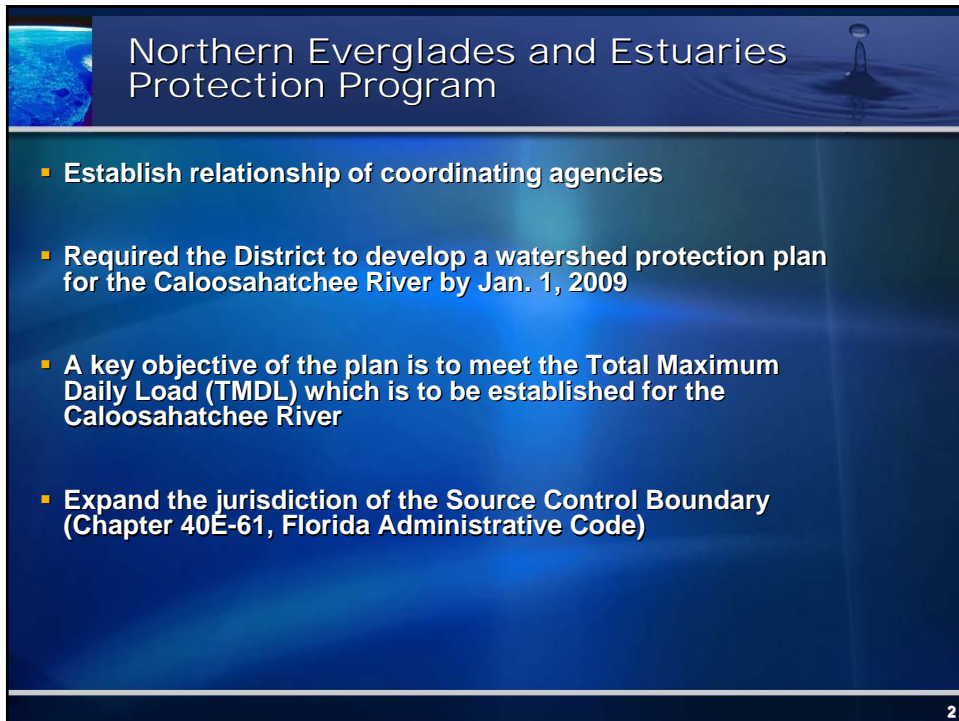


Proposed Source Control Program in support  
of the Northern Everglades and Estuaries  
Protection Program

April 30, 2009

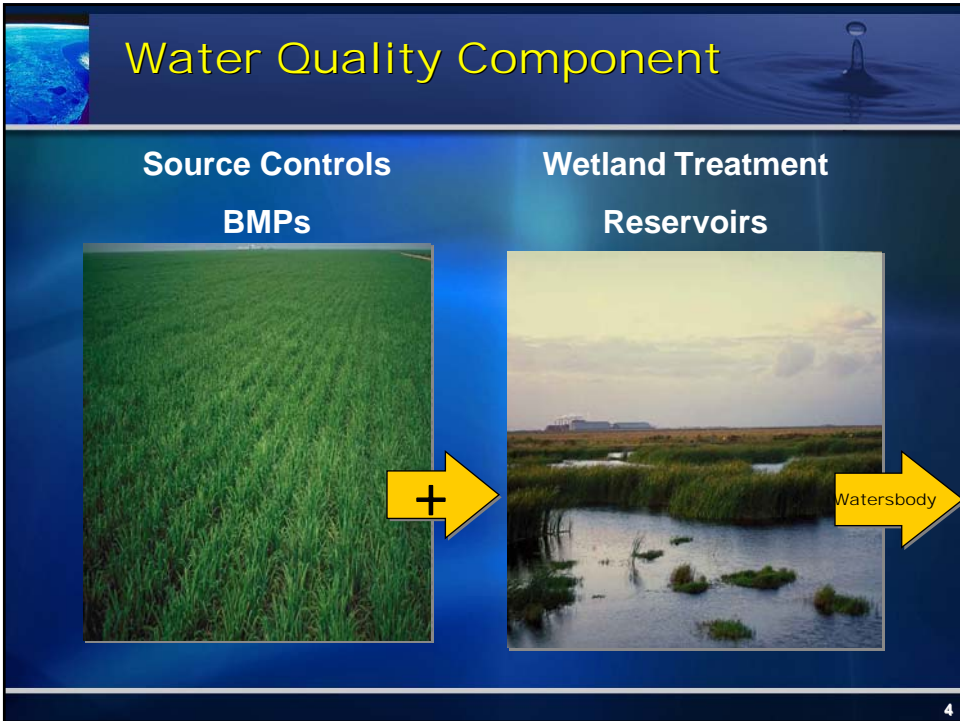
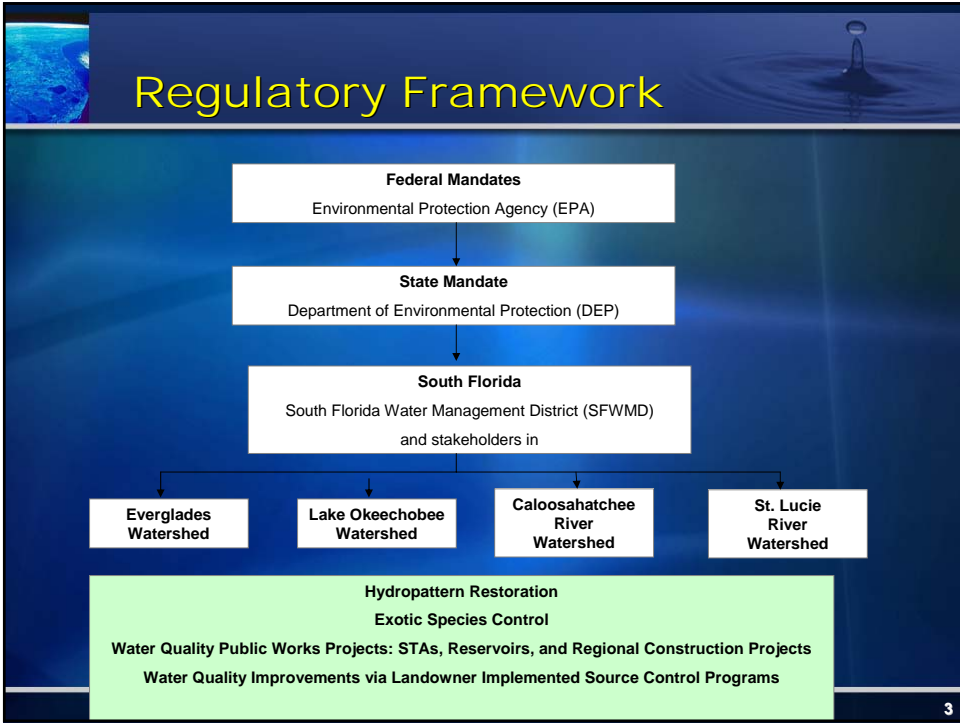
Steffany Gornak, Supervising Env. Analyst

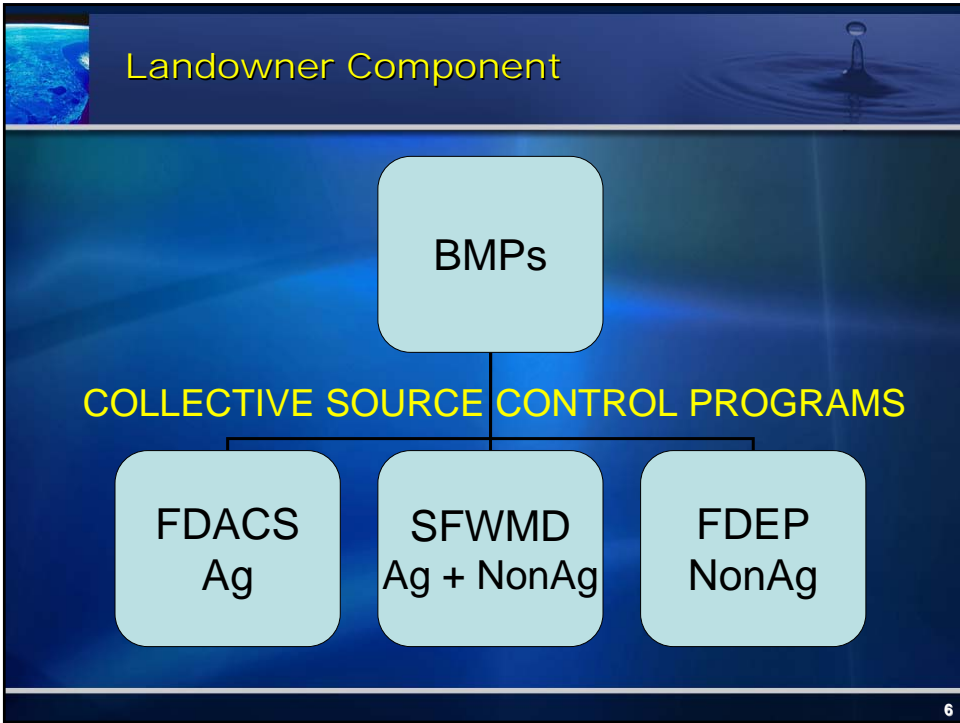
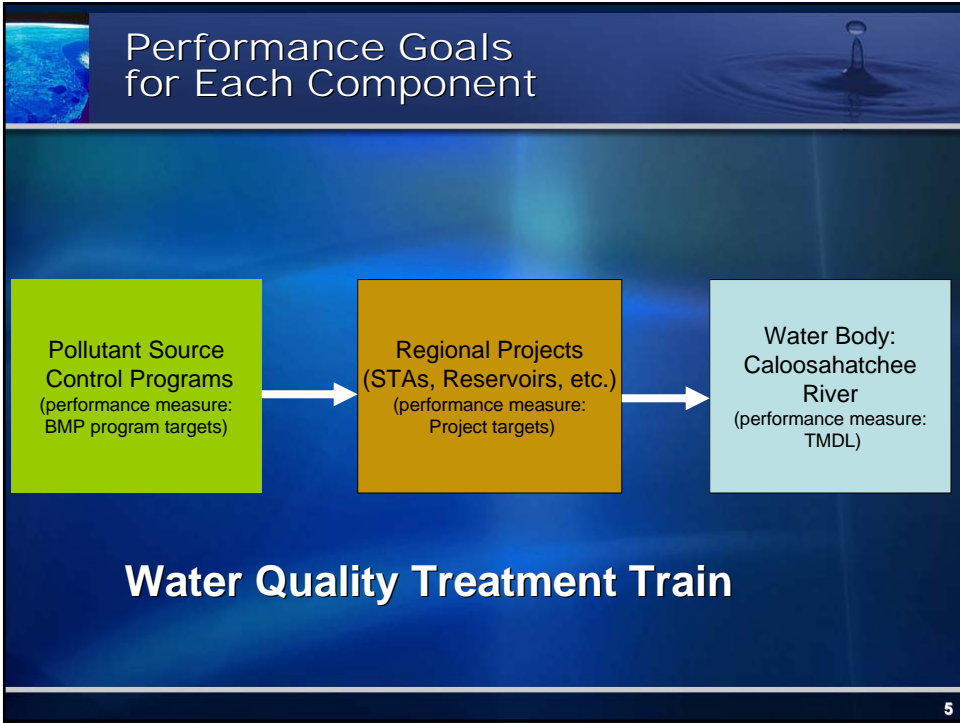


Northern Everglades and Estuaries  
Protection Program

- Establish relationship of coordinating agencies
- Required the District to develop a watershed protection plan for the Caloosahatchee River by Jan. 1, 2009
- A key objective of the plan is to meet the Total Maximum Daily Load (TMDL) which is to be established for the Caloosahatchee River
- Expand the jurisdiction of the Source Control Boundary (Chapter 40E-61, Florida Administrative Code)

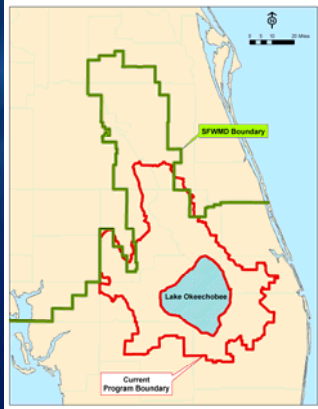
2





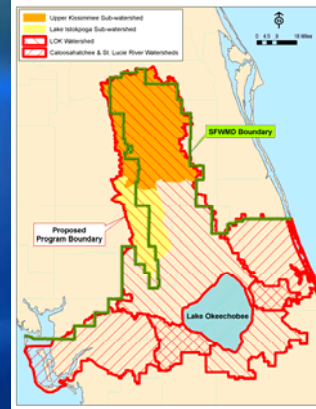
## Expanded Program Boundary

### Current Source Control Boundary



- Upper Kissimmee Sub-watershed
- Lake Istokpoga Sub-watershed
- Caloosahatchee River Watershed
- St. Lucie River Watershed

### Proposed Source Control Boundary



7

## Best Management Practice (BMP) strategy

- BMP Permits will be required for both Ag and Non-Ag land uses.
- BMP's will need to address
  - Nutrient management
  - Erosion control
  - Water management

8

BMPs

## Agricultural



This slide illustrates agricultural Best Management Practices (BMPs). It features three photographs: a tractor with a tillage implement in a field, a tractor in a field, and an excavator near a waterway.

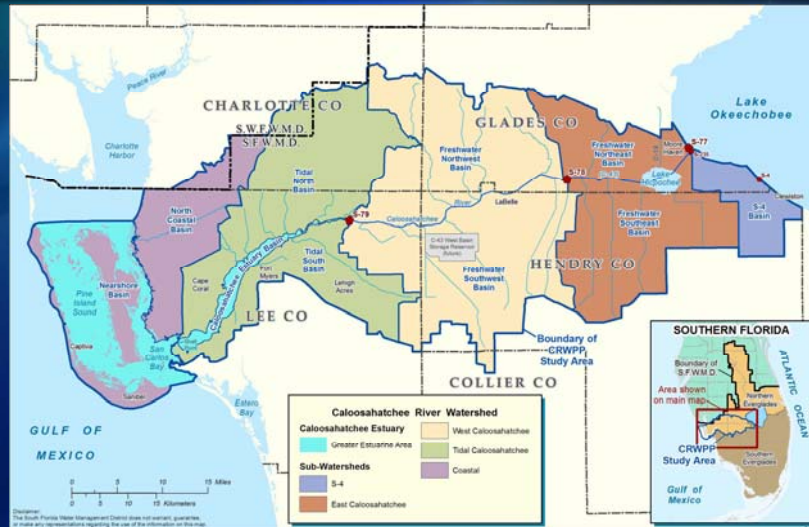
BMPs

## Non - Agricultural



This slide illustrates non-agricultural Best Management Practices (BMPs). It features three photographs: a worker on a slope, a street sweeper, and a truck with a crane.

## Measuring Collective Program Performance



11

## The Proposed Program's Role

- Implementing source control program using BMPs.
- Establish nutrient concentration limits for sites utilizing septage application
- Provide incentives for demonstration projects and research
- Define monitoring necessary to gauge performance of source control program
- Establish water quality performance criteria for the source control program
- Develop a plan for optimizing the collective BMP programs if the performance criteria are not met

12

## Questions?



13

## Chapter 40E-61 – The Current Program

- **Current Rule**
  - Performance based on limits set in Technical Publication 81-2. Load target – 397 English tons (360 MT) by July 1, 1992
  - Permits required a general phosphorus control plan for Non-ag and ag (so no equity among permittees)
- Selective District monitoring was used to determine parcel level compliance.

14

## Measuring Collective Program Performance

- **Monitoring by District at sub-watershed or summary basin level to track source control program performance**
- **Five-Year Rolling Avg**
- **Effective BMPs**
  - **Agricultural: 25% reduction of P loads**
  - **Non-Agricultural: 5% reduction of P loads**

